



5-AXIS MACHINING CENTER

ISCO offers a full range of machining capabilities, including the **Cincinnati FTV5-2500 Fixed Table Vertical Machining Center with 5-axis Spindle.**

The FTV5 integrates production capacity and speed with operational flexibility, giving **ISCO** the most versatile production of aerospace parts, medical prostheses, mold work, lofted surfaces and complex geometry.

Expanding the many **ISCO** machining services

- **3, 4 & 5-axis Milling**
- **N/C Turning**
- **Waterjet Cutting**

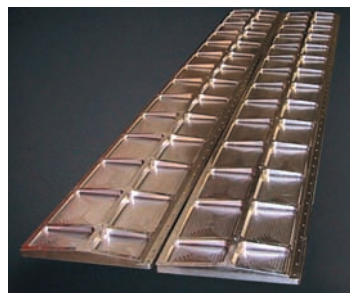
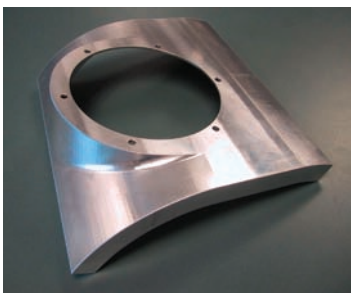
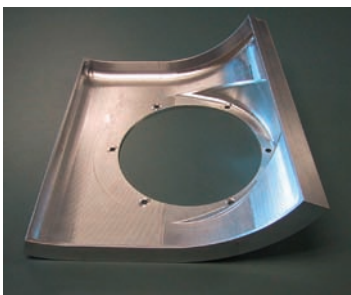


BENEFITS

- Fewer set-ups for faster production
- Large Capacity: 100" x 39.5" x 31.5"
- Fixed Table handles workloads to 17,000 lbs.

**LARGE CAPACITY ■ SUPER PRECISION
HIGHEST EFFICIENCY**

- 18,000 rpm articulated spindle for efficient machining of complex parts with minimum set-up
- Extreme accuracy with Heidenhain glass linear scales, spindle counterbalance, high rigidity structure



**Contact ISCO for
prompt quotes on
all your projects**

ISCO

P.O. Box 7378 • Bend, OR 97708
541-382-1573 • Fax: 541-382-6902
Email: isco@iscomach.com

www.iscomach.com

Design ■ Machining ■ Fabrication ■ Quality ■ Service ■ On-time Delivery